

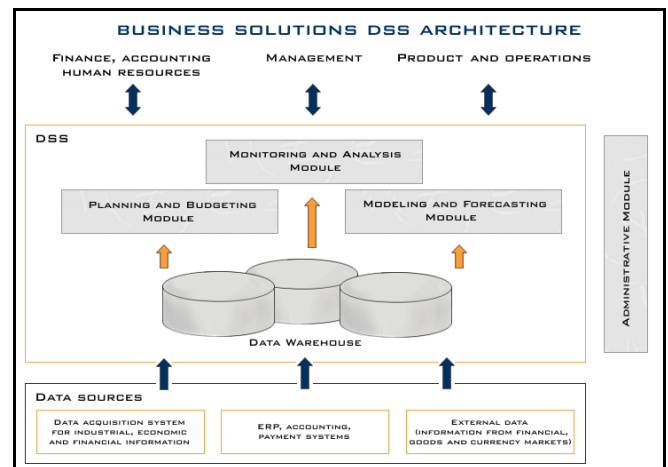
## BUSINESS SOLUTIONS

### Specialized Decision Support System (DSS)

Built upon the PROGNOZ 5 platform, DSS is flexible by design and engineered for ALL industries. Our modular approach to Business Intelligence guarantees that our solutions are mindful of your specific industry and organizational needs. Our goal is to allow corporate managers to make strategic, forward-thinking, and analytically-based decisions, and to deliver higher value-added to their clients.

#### KEY BENEFITS:

- Evaluate organizational productivity and efficiency, provide insight to management effectiveness and improve bottom line performance.
- Monitor ongoing business activities, investment, financial operations and payment trends.
- Customize reports based on specific user needs. Reports can be generated on schedules or on ad-hoc basis, ensuring decision makers to be well informed on relevant information.
- Consolidate data across different departments, subsidiaries, partners and vendors, providing a fully integrated view of data report to users.
- Conduct financial and economic analysis. Provide users with complete transparency and accurate and timely report and analysis on corporate financial information.
- Prepare and manage business plans and budgets. Enterprises can monitor and compare business activities on an ongoing basis as they execute their corporate plans and budget measures.
- Assess and manage investment strategies and related portfolios. Management can conduct various levels of analysis and choose the best feasible strategy.
- Generate simulation models and scenario forecasts. Allow enterprises to formulate appropriate response to possible event occurrence.



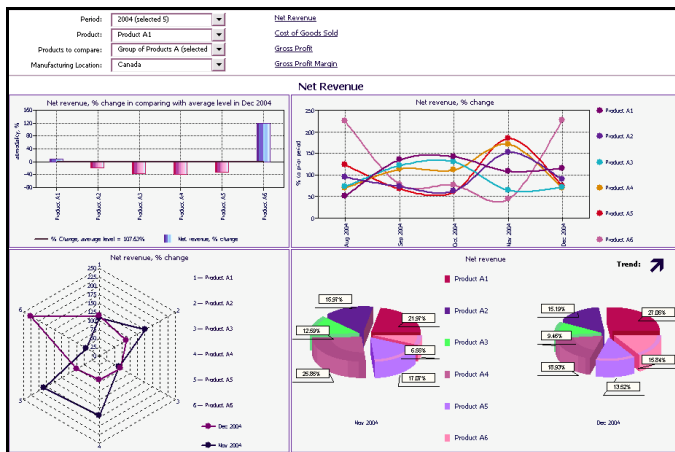
All information is stored within the DSS centralized data warehouse, creating a single source for querying, analyzing, monitoring and subsequent reporting. All these are made available within a user-friendly interface, which can be available to all users or customized to individual department needs. The need for IT intervention, costly power users and consulting fees is minimized.

## BUSINESS SOLUTIONS

### MONITORING AND ANALYSIS MODULE

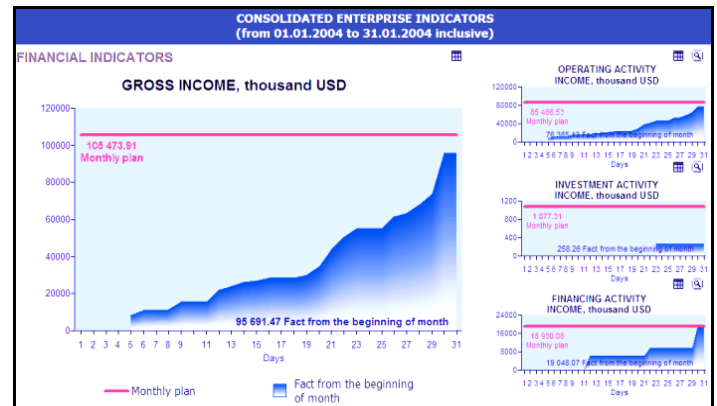
The monitoring and analysis module allows users to monitor and analyze the following information:

- **Financial and economic indicators** including: reporting/analysis of revenue and cost, sales and prices, profit/loss analysis, margins, taxes, expenses, cash flows, investment and balance of accounts.
- **Production indicators** including: production flows, raw materials inventory, feedstock consumption and labor input.
- **Business efficiency indicators** including: profit/loss analysis, solvency, financial stability and productivity evaluation.



### PLANNING AND BUDGETING MODULE

- Prepare and manage business plans and budgets.
- Allow enterprises to monitor and evaluate the execution and implementation of business plans and budget measures.
- Encourage collaboration through **seamless document workflow tools**.
- Conduct financial budgeting and forecasting using a variety of methodologies including: **top-down, bottom-up and hybrid**.

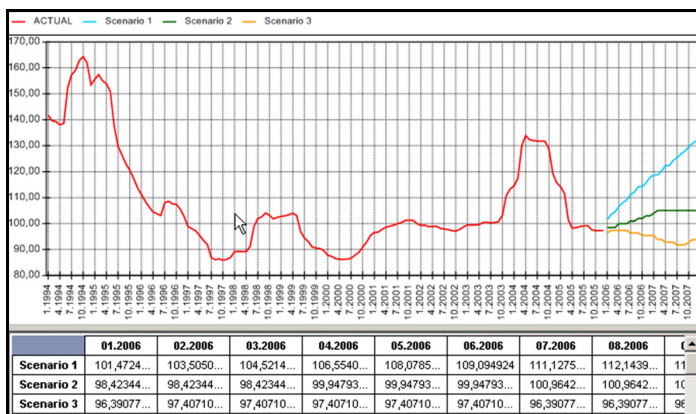


The **PROGNOZ Decision Support System (DSS)** ensures maximum efficiency by integrating existing infrastructure and leveraging pre-existing systems including Enterprise Resource Planning (ERP), payment and accounting, Customer Relationship Management (CRM), sales and marketing and external databases. The DSS has built-in compatibility with different comprehensive management systems for enterprises in various sectors such as mySAP Business Suite (SAP R/3) and other ERP-systems.

## BUSINESS SOLUTIONS

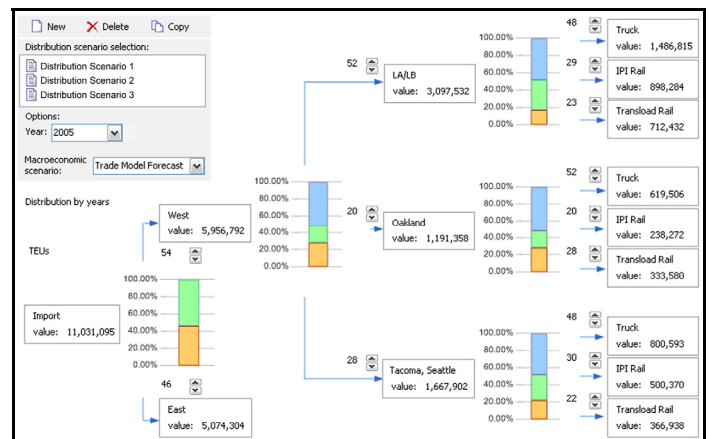
### MODELING AND FORECASTING MODULE

- Create dynamic financial and economic models.
- Allow users to build short-term forecast models on monthly business and economic indicators or on higher-frequency indicators such as interest rates and exchange rates.
- Also allow users to build medium- and long-term forecast models, to project a longer term outlook for their enterprises.
- Determine scenario control actions for selected forecast period (business investment and marketing metrics), in addition to exogenous variables (macro environment, tax policy, financial and currency markets, etc.)
- Execute alternative scenarios by changing assumptions ("What happens if .....?") and by target-forecasting ("What is necessary for .....?")
- Generate forecasts on schedules or on an ad-hoc basis.
- Compare, rank and benchmark scenarios.



### INVESTMENT MANAGEMENT MODULE

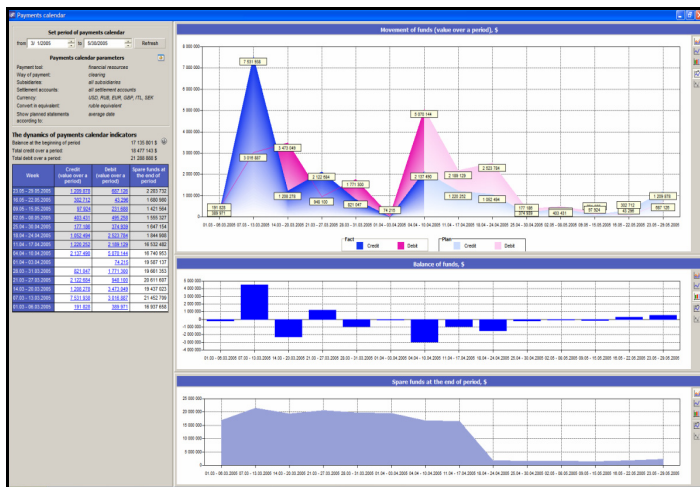
- Maintain a log of ongoing investment activities.
- Prepare customized investment portfolios based on specific needs and risk toleration of investors, clients or project requirement.
- Plan and monitor execution of investment plans. Compare the planned versus actual scenarios.
- Evaluate the implementation and effectiveness of investment activities.
- Allow users to compare and rank various investment activities (ROI, cost, margin analysis, risk).



## BUSINESS SOLUTIONS

### FINANCIAL PORTFOLIO MODULE

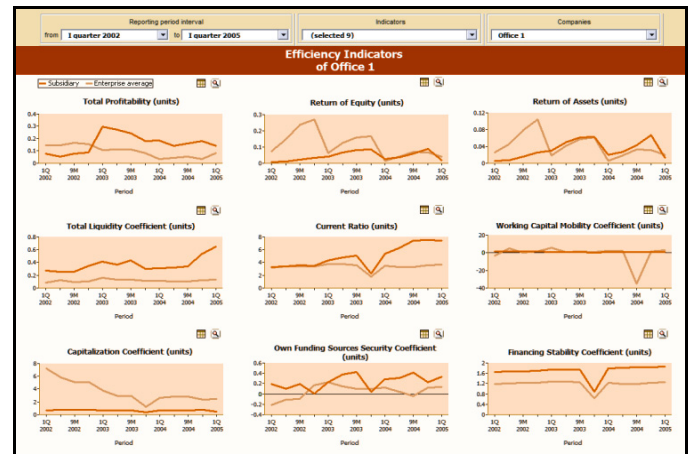
- Manage a database of financial loans and interest payment obligations.
- Maintain and evaluate execution of cash flow plans.
- Conduct financial analysis: interest expense, ongoing and upcoming cash flow analysis, gross margins, and bottom line performance.



PROGNOZ algorithms are open and can be easily modified/updated by users interested in fine-tuning their quantitative analysis. This philosophy of **algorithmic transparency** continues throughout our simulation models and our statistical and optimization methods.

### ADMINISTRATION MODULE

- Manage user right and access privileges.
- Conduct usage audits.
- Monitor and control data exchange with external systems.
- Implement master data management.



**PROGNOZ CORPORATION**  
 2000 Market Street, Floor 29, Philadelphia, PA USA 19103  
 Phone: 215 564 6306      Fax: 215 564 6309  
 Toll-Free 1 888 9 PROGNOZ  
[www.prognoz.com](http://www.prognoz.com) | [info@prognoz.com](mailto:info@prognoz.com)